

**NISCORT FATHER AGNEL SCHOOL**

**WORKSHEET-1**

**TOPIC: GETTING TO KNOW PLANTS**

1. Define the following:

a. Herbs are

---

---

b. Shrubs are

---

---

c. Trees are

---

---

d. Creepers are

---

---

e. Climbers are

---

---

2. State T/F

a. Roots grow upwards.

b. Anther is the female part of the flower.

c. Xylem helps in the conduction of water and minerals.

d. Transpiration is the type of excretion in plants.

3. Name the female and male parts of the flower

**FEMALE PARTS:**

---

---

**MALE PARTS:**

---

---

4. Differentiate between parallel venation and reticulate venation in leaves.

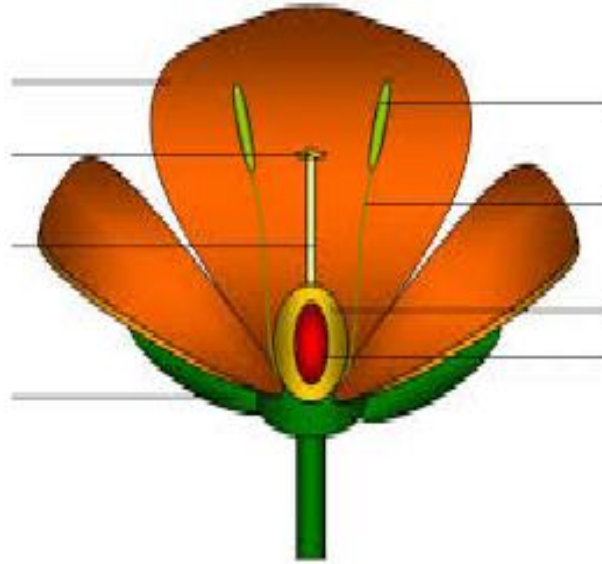
Parallel venation	Reticulate venation

5. Which of the following has reticulate venation?

Wheat, Tulsi, maize, grass, chinrose

6. Label the following diagrams:





**NISCORT FATHER AGNEL SCHOOL**

**WORKSHEET-2**

**CH-10 (MOTION AND ITS MEASUREMENT)**

1. Define motion.

---

---

2. What do you mean by measurement. How can you measure the quantity of anything?

---

---

---

---

3. State true/false and write the correct statements:

a. Distance between Pune and Goa can be measured in metres.

---

b. Movement of Strings of a guitar are an example of rectilinear motion.

---

c. In olden days, people used to move from one place to another with the help of bullock carts.

---

d. Handspan is the most reliable method of measuring the length of any fabric.

---

4. Give the units of measurement of the following:

a. Length \_\_\_\_\_

b. Weight \_\_\_\_\_

c. Pressure \_\_\_\_\_

d. Temperature \_\_\_\_\_

5. Give the various steps on how to measure with the help of a ruler?

---

---

---

---

---

---

6. Give two examples each of the following:

a. Rectilinear motion

---

---

b. Periodic motion

---

---

c. Circular motion

---

---